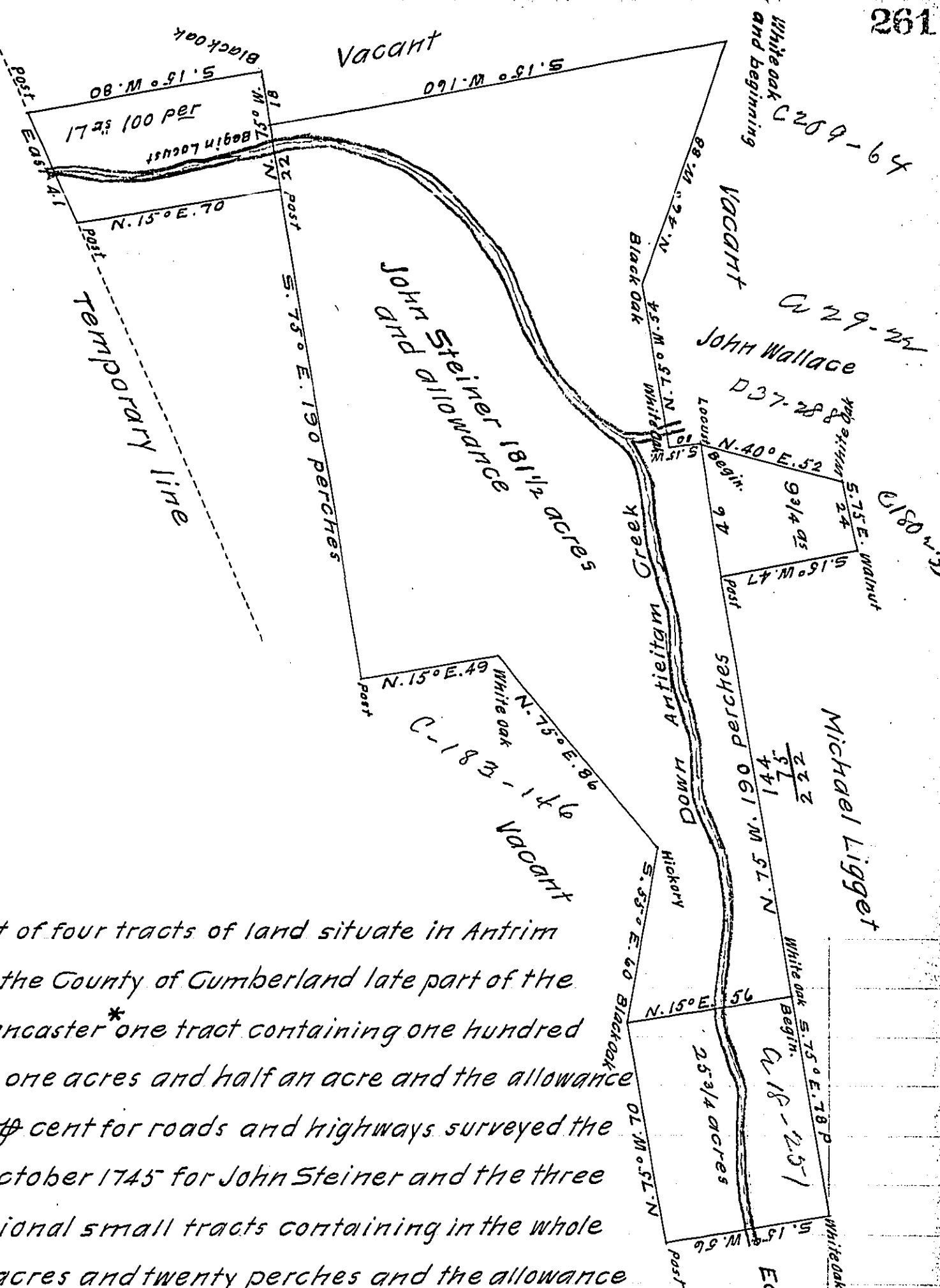


FORM NO. 1.



A draught of four tracts of land situate in Antrim township in the County of Cumberland late part of the County of Lancaster* one tract containing one hundred and eighty one acres and half an acre and the allowance of six acres $\frac{7}{8}$ cent for roads and highways surveyed the 5th day of October 1745 for John Steiner and the three other additional small tracts containing in the whole fifty three acres and twenty perches and the allowance proportional to six acres $\frac{7}{8}$ cent. for roads and highways surveyed the 1st day of April 1748 for John Steiner by Thomas Cookson Esq^r late Deputy Surveyor of Lancaster County in pursuance of a warrant bearing date at Philadelphia the 23^d day of May 1744.

Protracted from M^r Cookson's Field Book & calculated.

To Nicholas Scull Esq^r Surv^r Gen^l * Now Franklin County Geo. Stevenson one of the Ex^{rs} of Tho^s Cookson, deced

IN TESTIMONY that the above is a copy of the original remaining on file in the Department of Internal Affairs of Pennsylvania, made conformably to an Act of Assembly approved the 16th day of February, 1833, I have hereunto set my Hand and caused the Seal of said Department to be affixed at Harrisburg, this nineteenth day of December 1911

25 3/4
9 3/4
181 1/2
17

234 100

Nancy Hancock
Secretary of Internal Affairs.